

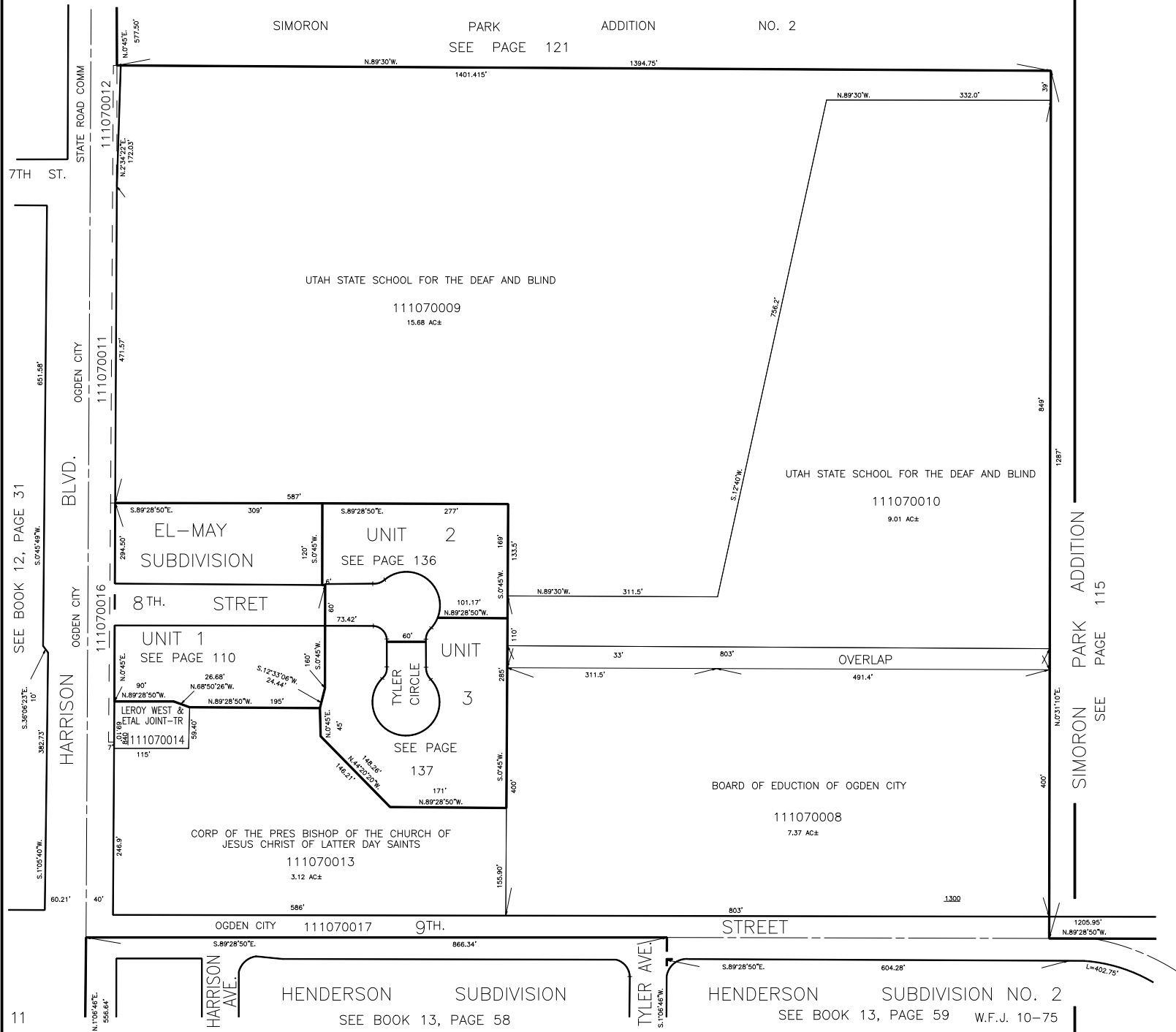
PART OF S.W. 1/4 OF  
SECTION 15, T.6N., R.1W., S.L.B. & M.

107-1

TAXING UNIT: 25

IN OGDEN CITY  
SCALE 1" = 100'

SIMORON PARK ADDITION NO. 2  
SEE PAGE 121



SEE BOOK 12, PAGE 31

11

SIMORON PARK ADDITION  
SEE PAGE 115